

VisualDSS

End-to-End Decision Support System for CAE

Benefits

- Easy collaboration between cross-disciplinary teams who can make the best decision earlier in the product development process
- Increased productivity and better product delivery within reduced cycle time and controlled costs
- Optimization of the organization by tracing and sharing simulation process and data within the extended enterprise
- Dissemination of best practices and capture of workflows through customers' environment integration

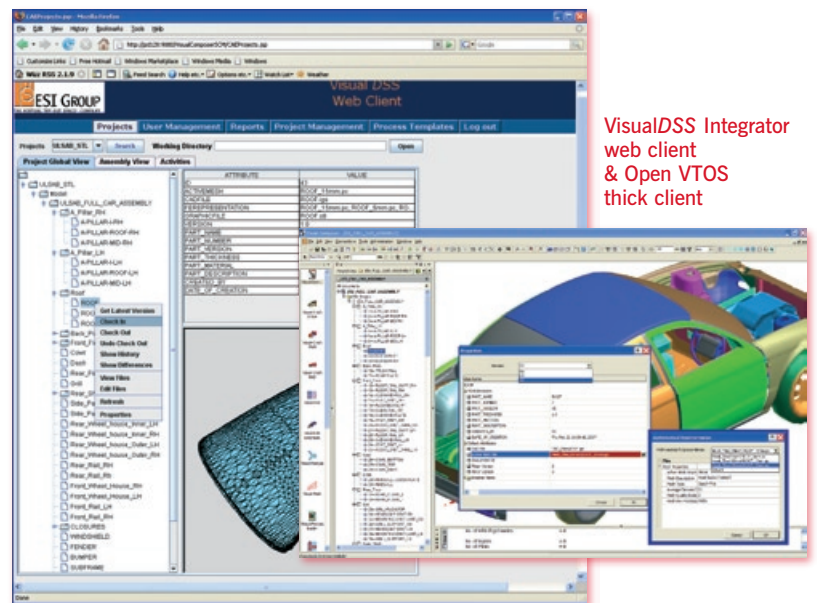
Key Features

- Bridge between CAD Geometry and FE Physics - propagation of design change from PDM to CAE simulation; engineering change and design recommendation from CAE to design and PDM system
- Capturing CAE best practices and defining Load Case and Work Flow templates for all CAE domains
- Advanced search features, re-use of models, version controls, model cloning for faster iteration, decision support reports, data security and user roles management
- Open, scalable, and flexible architecture that can integrate any application in the enterprise

Manufacturers widely resort to simulation based design to get a competitive edge in product development. By launching VisualDSS, ESI Group delivers the most advanced end-to-end Decision Support System to support simulation process and data management. VisualDSS is an open environment which enables companies to build & manage simulation models for multi-domain usage, to automate processes & workflow and to manage simulation content & data in order to further leverage companies' best practices and increase the value of simulation.

Fostering tremendous productivity gain!

By taking advantage of best simulation solutions within a highly integrated unified simulation environment, VisualDSS optimizes the usage of enterprise engineering assets: engineers' expertise and simulation technology. Every day across the extended enterprise, VisualDSS makes the best out of engineers' talents by controlling, organizing and managing intellectual property. VisualDSS helps enterprise deliver the best product at the best cost within a shorter time-to-market by optimizing the creation of value.



Management of Multi-Domain Compute Model

VisualDSS capabilities include unique and patented ways of building and maintaining the bidirectional link between CAD data stored in PLM systems and simulation domains. It allows transferring design and engineering modifications to the extended multi-domain team, thus enabling data traceability throughout the development process and more.

Management of Process & Workflow

VisualDSS improves effectiveness of business productivity and allows engineers to automate repetitive and cumbersome tasks in their Simulation Based Design process. Customers can capitalize, share and deploy their best practices within their extended ecosystem, taking advantage of the common multi-domain compute model and the openness of the solution to third party applications.

Management of Simulation Content & Data

VisualDSS features also a data persistency environment, which gathers the simulation data from the different applications used during the whole simulation lifecycle. It enables the capture, storage and reuse of the enterprise knowledge and best practices.

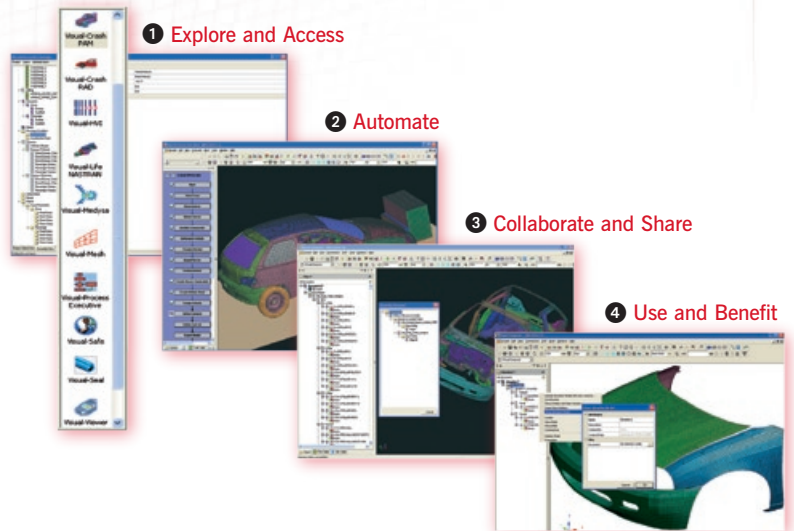
VisualDSS authorizes flexible enterprise deployment by integrating efficiently within the IT and data architecture of every company. It gives the ability to link to standard or corporate databases or PLM systems.

VisualDSS Integrator

VisualDSS Integrator web client provides one environment to all kinds of users right from the CEO to the CAE engineer to define, manage and use the best assets of the enterprises such as the corporate best practices and the life cycle of simulations across all domains and enterprises by making use of the enterprise deserved CAE data editors and viewers.

Decision Support & Reporting

By orienting right design decision early in the product development cycle, Simulation Based Design stands at the heart of product excellence delivery in a highly competitive environment. VisualDSS combines the best of scattered multi team's expertise with the power of simulation and IT infrastructure to support the best decision-making with a maximum of knowledge, flexibility and responsiveness. VisualDSS offers a solution which addresses from workgroups to small, medium and large companies needs.



About ESI Group

ESI Group is a pioneer and world leading provider of digital simulation software for prototyping and manufacturing processes that take into account the physics of materials. ESI Group has developed an entire suite of coherent, industry-oriented applications to realistically simulate a product's behavior during testing, to fine tune the manufacturing processes in synergy with the desired product performance, and to evaluate the environment's impact on product usage. ESI Group's product portfolio, which has been industrially validated and combined in multi-trade value chains, represents a unique collaborative, virtual engineering solution, known as the Virtual Try-Out Space (VTOS), enabling a continuous improvement on the virtual prototype. By drastically reducing costs and development lead times, VTOS solutions offer major competitive advantages by progressively eliminating the need for physical prototypes.

ESI GROUP
THE VIRTUAL TRY-OUT SPACE® COMPANY
www.esi-group.com
info@esi-group.com

ESI GROUP HEADQUARTERS
ESI Group
8 RUE CHRISTOPHE COLOMB
75008 PARIS
FRANCE
Phone: +33 (0)1 53 65 14 14
Fax: +33 (0)1 53 65 14 12

ESI Group
PARC D'AFFAIRES SILIC
99 RUE DES SOLETS - BP 80112
94513 RUNGIS CEDEX
FRANCE
Phone: +33 (0)1 41 73 58 00
Fax: +33 (0)1 46 87 72 02

EUROPE				SOUTH AMERICA			
<p>FRANCE ESI FRANCE PARC D'AFFAIRES SILIC 99 RUE DES SOLETS - BP 80112 94513 RUNGIS CEDEX FRANCE Phone: +33 (0)1 49 78 28 00 Fax: +33 (0)1 46 87 72 02</p>	<p>GERMANY ESI GmbH Margenthalerallee 15-21 65760 Eschborn Germany Phone: +49(0)6196 9583-0 Fax: +49 (0)6196 9583-111</p>	<p>BENELUX AND SCANDINAVIA ESI BV Radox Innovation Centre - R 4.57 Rotterdamseweg 183 C 2629 HD Delft The Netherlands Phone: +31 (0)15 2682501 Fax: +31 (0)15 2682514</p>	<p>CZECH REPUBLIC & EASTERN EUROPEAN COUNTRIES MECAS ESI s.r.o. Brojova 2113/16 326 00 Pilzen Czech Republic Phone: +420 377 432 931 Fax: +420 377 432 930</p>	<p>SPAIN The Virtual Try-Out Space S.L. Edificio INEA, Oficina 311 C/ Estarlete, 5 48940 Leiza (Bizkaia) Spain Phone: +34 94 480 47 60 Fax: +34 94 480 51 99</p>	<p>SWITZERLAND Calcom ESI SA Parc Scientifique EPFL / PSE-A 1015 Lausanne-EPFL Switzerland Phone: +41 21 693 2918 Fax: +41 21 693 4740</p>	<p>UNITED KINGDOM ESI-UK Ltd. The Magdalen Centre Oxford Science Park Oxford OX4 4GA United Kingdom Phone: +44 (0) 1865 338007 Fax: +44 (0) 1865 338100</p>	<p>BRAZIL ESI Group South America Technical Support Office Rua Artur de Azevedo, 1857 cj. 45 São Paulo - SP 05404-015 Brazil Phone/Fax: +55 11 3062-3698</p>
NORTH AMERICA			ASIA				
<p>USA ESI North America Commercial Headquarters 36800 Woodward Avenue Suite 200 Bloomfield Hills, MI 48304 USA Phone: +1 (248) 203 0642 Fax: +1 (248) 203 0636</p>	<p>USA ESI US R&D 6767 Old Madison Pike Suite 600 Huntsville, AL 35806 USA Phone: +1 (256) 713-4700 Fax: +1 (256) 713-4799</p>	<p>JAPAN NIHON ESI K.K. Headquarters and Sales Division Yoyogi-Uehara West Building, 45-18 Oyama-Cho - Shibuya-ku Tokyo 151-0065 Japan Phone: +81 3 6407 2347 Fax: +81 3 6407 2395</p>	<p>KOREA Hankook ESI 157-033, 5F KOMEGA bldg., 660-6, Deungchon-3Dong, Gangseo-ku, Seoul South Korea Phone: +82 2 3664 0073 Fax: +82 2 3662 0084</p>	<p>SOUTH-EAST ASIA ESI Group South-East-Asia Office 96-1, Jalan PJU 1/3B SunwayMas Commercial Center 47301 Petaling Jaya, Selangor Malaysia Phone: +60 (3) 78049973 Fax: +60 (3) 78047354</p>	<p>CHINA ZHONG GUO ESI CO., LTD Unit 608A, Guangdong Soft-Park No.11 Caipin Road, Complex Bldg. Guangzhou Science City (GSC) Guangzhou City 510663 China Phone: +86 (020) 3206 8272 Fax: +86 (020) 3206 8107</p>	<p>CHINA ATE Technology International LTD Room 16A, Base F Fu Hua Mansion No. 8 Chaoyangmen North Avenue Beijing 100027 China Phone: +86 (10) 6554 4907 Fax: +86 (10) 6554 4911</p>	<p>INDIA Sales & Technical Branch Office Indrakrupa #17, 100 feet ring road 3rd phase, 6th block, Banashankari 3rd stage Bangalore 560 085 India Phone: +91 98809 26926 Fax: +91 80401 74705</p>